



FOTO / PHOTO



TECHNICAL NOTES

Codice	Dimensione h x l	Watt	Kcal
Code	Dimension h x w	dt50	dt60
код	Размер b x w		

For  $\Delta T$  different from 50°C use the formula:  $Q=Q_n (\Delta T/50)^n$

H.600

RI-600-2	H 600mm. x L 400mm.	348	376
RI-600-3	H 600mm. x L 600mm.	522	564
RI-600-4	H 600mm. x L 800mm.	696	752
RI-600-5	H 600mm. x L 1000mm.	870	940
RI-600-6	H 600mm. x L 1200mm.	1.044	1.128
RI-600-7	H 600mm. x L 1400mm.	1.218	1.316
RI-600-8	H 600mm. x L 1600mm.	1.392	1.504
RI-600-9	H 600mm. x L 1800mm.	1.566	1.692
RI-600-10	H 600mm. x L 2000mm.	1.740	1.880

H.800

RI-800-2	H 800mm. x L 400mm.	435	472
RI-800-3	H 800mm. x L 600mm.	653	708
RI-800-4	H 800mm. x L 800mm.	871	943
RI-800-5	H 800mm. x L 1000mm.	1.089	1.179
RI-800-6	H 800mm. x L 1200mm.	1.306	1.415
RI-800-7	H 800mm. x L 1400mm.	1.524	1.651
RI-800-8	H 800mm. x L 1600mm.	1.742	1.887
RI-800-9	H 800mm. x L 1800mm.	1.959	2.123
RI-800-10	H 800mm. x L 2000mm.	2.177	2.358

H.1200

RI-1200-1	H 1200mm. x L 200mm.	301	327
RI-1200-2	H 1200mm. x L 400mm.	601	654
RI-1200-3	H 1200mm. x L 600mm.	902	982
RI-1200-4	H 1200mm. x L 800mm.	1.202	1.309
RI-1200-5	H 1200mm. x L 1000mm.	1.503	1.636
RI-1200-6	H 1200mm. x L 1200mm.	1.804	1.963
RI-1200-7	H 1200mm. x L 1400mm.	2.104	2.291

H.1400

RI-1400-1	H 1400mm. x L 200mm.	341	372
RI-1400-2	H 1400mm. x L 400mm.	682	743
RI-1400-3	H 1400mm. x L 600mm.	1.023	1.115
RI-1400-4	H 1400mm. x L 800mm.	1.364	1.487
RI-1400-5	H 1400mm. x L 1000mm.	1.705	1.859
RI-1400-6	H 1400mm. x L 1200mm.	2.045	2.230

H.1600

RI-1600-1	H 1600mm. x L 200mm.	381	416
RI-1600-2	H 1600mm. x L 400mm.	761	832
RI-1600-3	H 1600mm. x L 600mm.	1.142	1.248
RI-1600-4	H 1600mm. x L 800mm.	1.522	1.664
RI-1600-5	H 1600mm. x L 1000mm.	1.903	2.080

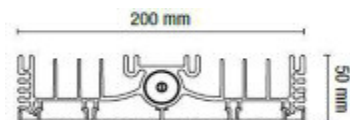
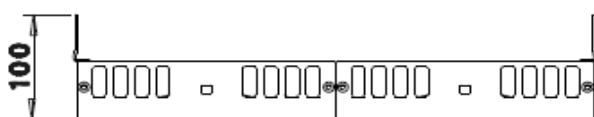
H.1800

RI-1800-1	H 1800mm. x L 200mm.	420	459
RI-1800-2	H 1800mm. x L 400mm.	840	918
RI-1800-3	H 1800mm. x L 600mm.	1.261	1.377
RI-1800-4	H 1800mm. x L 800mm.	1.681	1.837
RI-1800-5	H 1800mm. x L 1000mm.	2.101	2.296

H.2000

RI-2000-1	H 2000mm. x L 200mm.	460	502
RI-2000-2	H 2000mm. x L 400mm.	919	1.004
RI-2000-3	H 2000mm. x L 600mm.	1.379	1.507
RI-2000-4	H 2000mm. x L 800mm.	1.838	2.009
RI-2000-5	H 2000mm. x L 1000mm.	2.298	2.511

TECHNICAL DRAWING



AVAILABLE FINISHES



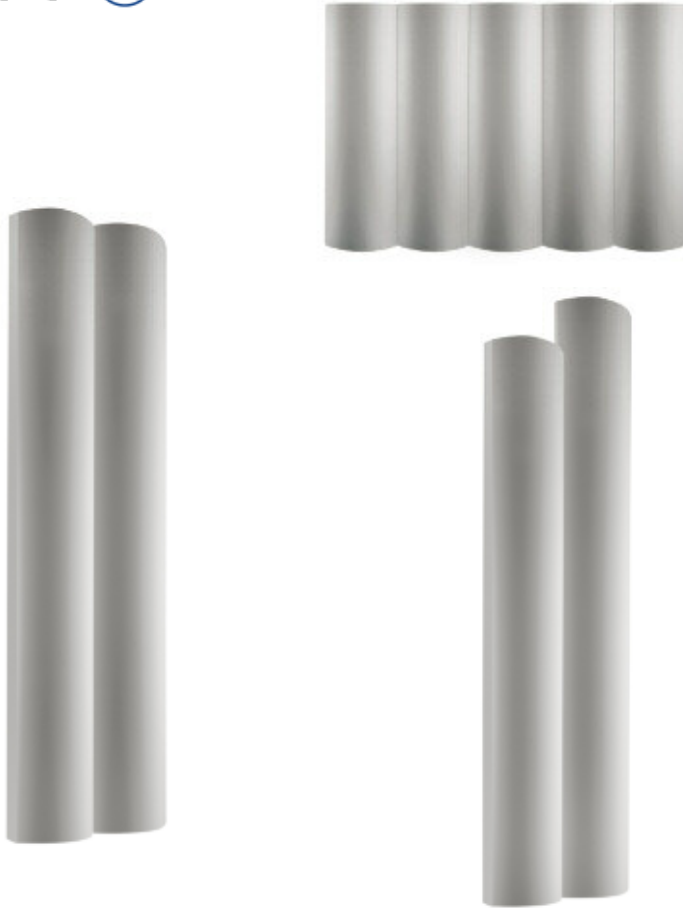
TECHNICAL NOTES

MATERIAL: aluminium  
 ELECTRIC VERSION: available  
 MIXED VERSION: available  
 ELECTRIC ELEMENT CLASS 2: available  
 MAXIMAL WORKING PRESSURE: 6 bars  
 HEIGHTS: Special heights on request  
 WIDTH: for ELEMENTS number  
 Optional height from the floor (min. 10cm)  
 Specify in the order: material and diameter of the connection pipe  
 (for the water heated towel rail)



FOTO / PHOTO

TECHNICAL NOTES



Codice Code код	Dimensione h x l Dimension h x w Размер b x w	Watt dt50	Kcal dt60
-----------------------	---	--------------	--------------

For ΔT different from 50°C use the formula: Q=Qn (ΔT/50)<sup>n</sup>

H.600

TO-600-1	H 600mm. x L 200mm.	177	193
TO-600-2	H 600mm. x L 400mm.	354	386
TO-600-3	H 600mm. x L 600mm.	531	579
TO-600-4	H 600mm. x L 800mm.	1.062	1.158
TO-600-5	H 600mm. x L 1000mm.	1.328	1.448
TO-600-6	H 600mm. x L 1200mm.	1.593	1.737
TO-600-7	H 600mm. x L 1400mm.	1.859	2.027
TO-600-8	H 600mm. x L 1600mm.	2.124	2.316
TO-600-9	H 600mm. x L 1800mm.	2.390	2.606
TO-600-10	H 600mm. x L 2000mm.	2.655	2.895

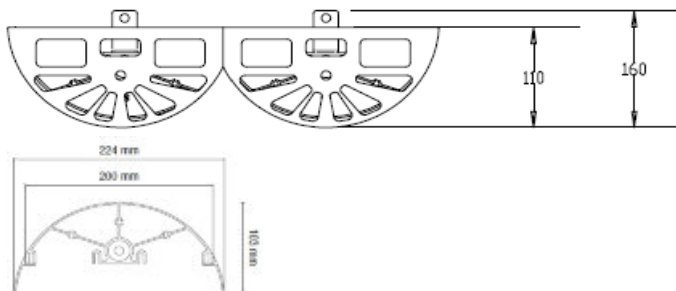
H.800

TO-800-1	H 800mm. x L 200mm.	237	258
TO-800-2	H 800mm. x L 400mm.	474	517
TO-800-3	H 800mm. x L 600mm.	711	775
TO-800-4	H 800mm. x L 800mm.	1.422	1.551
TO-800-5	H 800mm. x L 1000mm.	1.778	1.938
TO-800-6	H 800mm. x L 1200mm.	2.133	2.326
TO-800-7	H 800mm. x L 1400mm.	2.489	2.714
TO-800-8	H 800mm. x L 1600mm.	2.844	3.101
TO-800-9	H 800mm. x L 1800mm.	3.200	3.489
TO-800-10	H 800mm. x L 2000mm.	3.555	3.877

H.1200

TO-1200-1	H 1200mm. x L 200mm.	356	388
TO-1200-2	H 1200mm. x L 400mm.	711	776
TO-1200-3	H 1200mm. x L 600mm.	1.067	1.164
TO-1200-4	H 1200mm. x L 800mm.	1.423	1.552
TO-1200-5	H 1200mm. x L 1000mm.	1.779	1.939
TO-1200-6	H 1200mm. x L 1200mm.	2.134	2.327
TO-1200-7	H 1200mm. x L 1400mm.	2.490	2.715

TECHNICAL DRAWING



H.1400

TO-1400-1	H 1400mm. x L 200mm.	403	457
TO-1400-2	H 1400mm. x L 400mm.	807	914
TO-1400-3	H 1400mm. x L 600mm.	1.210	1.371
TO-1400-4	H 1400mm. x L 800mm.	1.614	1.827
TO-1400-5	H 1400mm. x L 1000mm.	2.017	2.284
TO-1400-6	H 1400mm. x L 1200mm.	2.420	2.639

H.1600

TO-1600-1	H 1600mm. x L 200mm.	441	501
TO-1600-2	H 1600mm. x L 400mm.	882	1.001
TO-1600-3	H 1600mm. x L 600mm.	1.324	1.502
TO-1600-4	H 1600mm. x L 800mm.	1.765	2.003
TO-1600-5	H 1600mm. x L 1000mm.	2.206	2.503

AVAILABLE FINISHES

TECHNICAL NOTES



MATERIAL: aluminium  
 ELECTRIC VERSION: available  
 MIXED VERSION: available  
 ELECTRIC ELEMENT CLASS 2: available  
 MAXIMAL WORKING PRESSURE: 6 bars  
 HEIGHTS: Special heights on request  
 WIDTH: for ELEMENTS number  
 Optional height from the floor (min. 10cm)  
 Specify in the order: material and diameter of the connection pipe  
 (for the water heated towel rail)

H.1800

TO-1800-1	H 1800mm. x L 200mm.	482	548
TO-1800-2	H 1800mm. x L 400mm.	965	1.095
TO-1800-3	H 1800mm. x L 600mm.	1.447	1.643
TO-1800-4	H 1800mm. x L 800mm.	1.930	2.190
TO-1800-5	H 1800mm. x L 1000mm.	2.412	2.738

H.2000

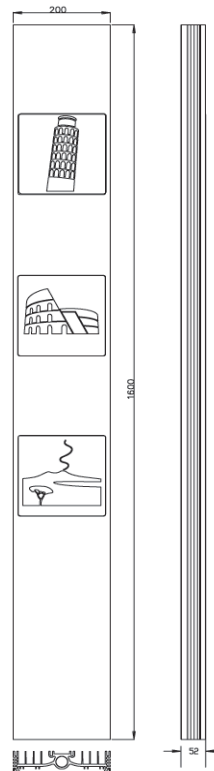
TO-2000-1	H 2000mm. x L 200mm.	544	565
TO-2000-2	H 2000mm. x L 400mm.	1087	1.129
TO-2000-3	H 2000mm. x L 600mm.	1631	1.694
TO-2000-4	H 2000mm. x L 800mm.	2175	2.259
TO-2000-5	H 2000mm. x L 1000mm.	2719	2.824

FOTO / PHOTO

DISEGNO TECNICO / TECHNICAL DRAWING

FINITURE DISPONIBILI / AVAILABLE FINISHES

Rev.01



**VERNICIATI / varnished finishes**



BIANCO / WHITE



SABBIA / SAND



MARRONE / BROWN



ANTRACITE / ANTHRACITE



Radiatore in alluminio  
Kit doppio funzionamento (acqua calda/elettricità) a richiesta



Alluminium radiator  
Combined fuel (hot water/electricity) kit on request



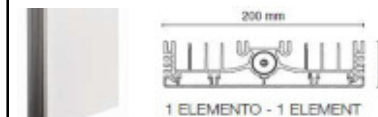
Алюминиевый радиатор  
Модуль комбинированного нагрева (горячая вода, электричество) - по запросу



TECHNICAL NOTES

Model	Height	Width	Weight	Watt ( $\Delta T 50^{\circ}C$ )	Btu	Kcal
H2003	1600mm	200mm	11,0Kg	381	1300	416

OPTIONAL



TECHNICAL NOTES

MATERIAL: aluminium  
ELECTRIC VERSION: available  
MIXED VERSION: available  
ELECTRIC ELEMENT CLASS 2: available  
MAXIMAL WORKING PRESSURE: 6 bars

**TECHNICAL NOTES**

ALTEZZE / HEIGHTS  
Altezze speciali a richiesta / Special heights on request  
LARGHEZZA / WIDTH  
per numero ELEMENTI / for ELEMENTS number

NOTES

For  $\Delta T$  different from  $50^{\circ}C$  use the formula:  $Q=Q_n (\Delta T/50)n$   
Watt= Kcal/h  $\div$  0,860 - Kcal/h= Watt  $\div$  0,860  
Specify in the order: material and diameter of the connection pipe (for the water heated towel rail)  
Disponibile anche nella versione elettrica / Also available in electric version

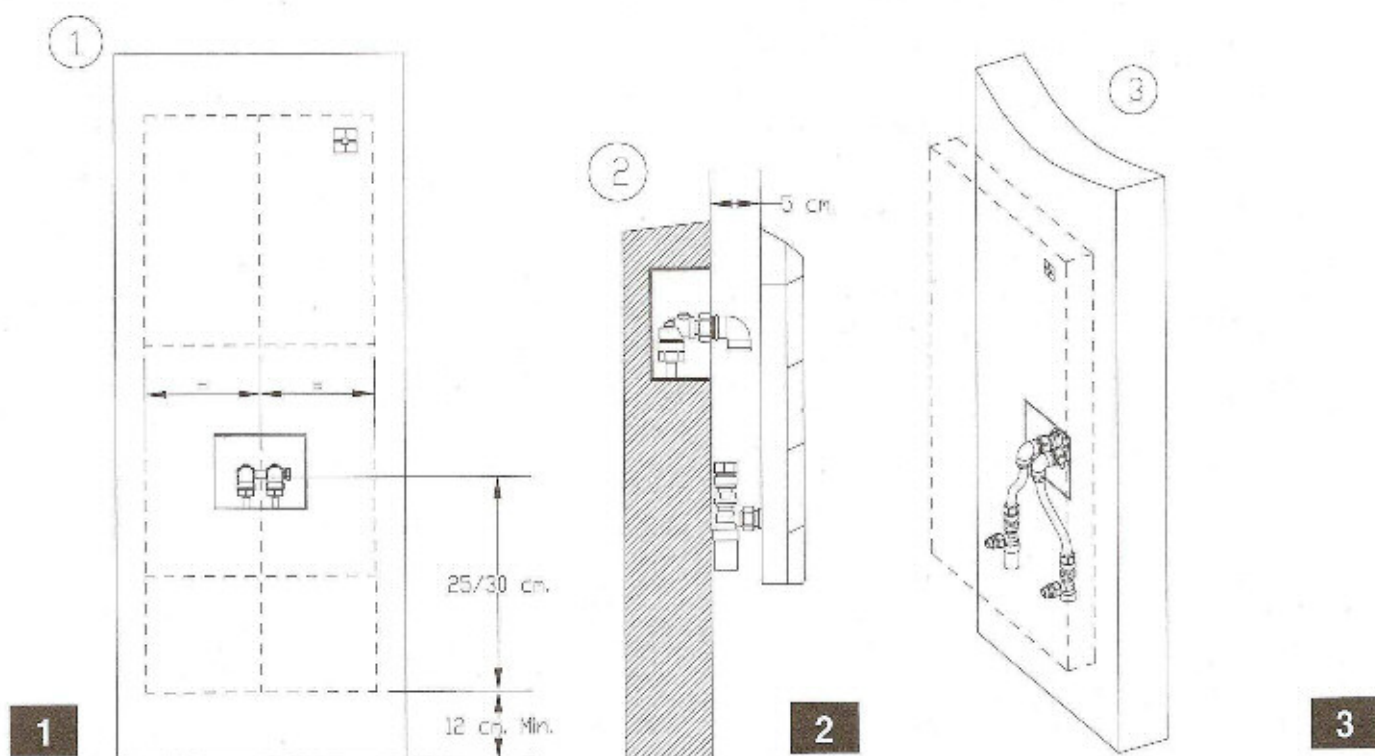
## Collegamento idraulico con/senza valvola H

Conexión hidráulica con/sin válvula H

Hydraulic connection with/without H angle valve

Connection hydraulique avec/sans valve H

Hydraulische Verbindung mit/ohne H Ventil



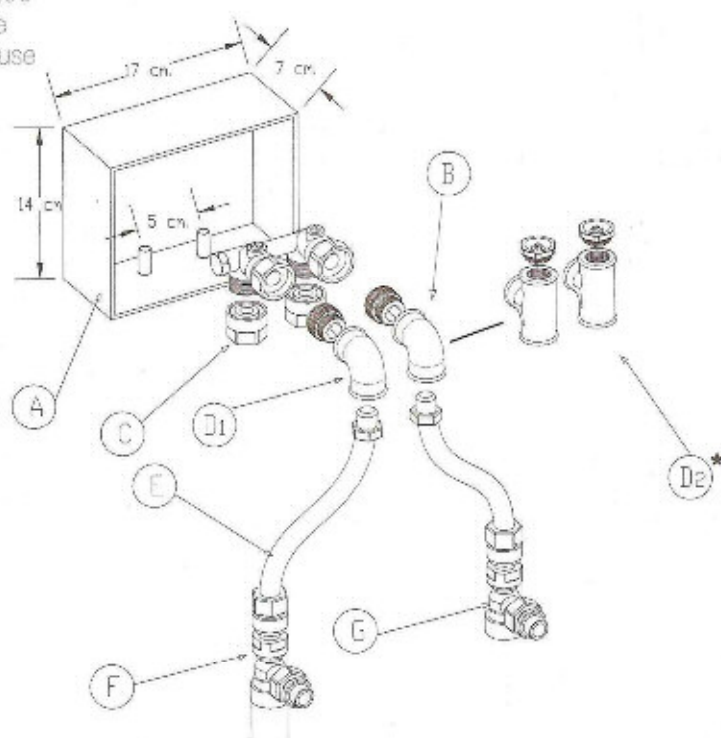
## Sistema Valvola H + cassetta da incasso

H angle valve + in-wall box

Válvula H + caja de encastré

Valve H + boîte encastrée

H Ventil + unterputzgehäuse



**A** cassetta d'incasso/in-wall box  
caja de encastré/boîte encastrée  
Unterputzgehäuse

**B** valvola H / H angle valve  
válvula en H / valve H  
H Ventil

**C** adattatore tubo rame/multistrato  
copper/multilayer pipe adapter  
raccord unión latón/multicapas/PEX  
adaptateur tube en cuivre/multistrato  
Adapter für H Ventil  
und Kupferrohr/Mehrschichtrohr

**D1** gomito 1/2" F-F  
1/2" F-F fitting elbow (not provided) / codo  
1/2" F-F (no previstos) / coude 1/2" F-F (pas  
fourni) / Bogen (nicht geboten)

**D2\*** raccordo "T" 1/2" F x 1/2" F x 1/2" F  
(non fornito) / T fitting 1/2" F x 1/2" F x 1/2" F  
with air vent valve (not provided) / T montage  
1/2" F x 1/2" F x 1/2" F con válvula de alivio  
(no previstos) / Raccord en T 1/2" F x 1/2"  
F x 1/2" F avec soupape de décharge (pas  
fourni) / Fitting T 1/2" F x 1/2" F x 1/2" F mit  
Überdruckventil (nicht geboten)

**E** tubo flessibile inox EPDM / inox-EPDM flexi-  
ble tube / tubo flexible inoxidable-EPDM /  
tuyaux flexible inox EPDM /  
Edelstahlflexschläuche

**F** valvola / valve  
válvula / valve  
Ventil

**G** detentore / lockshield valve  
detentor / détenteur  
Hilfventil

\* Nel caso di impianti idraulici centralizzati o con limitata portata di acqua sostituire D1 con D2  
In case of centralized hydraulic system or slow water flow, use D1 and not D2 / En el caso de  
calefacción central o de flujo limitado de agua, uso D1 no D2 / En cas de chauffage central ou  
débit limité de l'eau, utiliser D1 pas D2 / bei Zentralheizung oder bei begrenztem Wasserfluss  
Einsatz, D1 und nicht D2 verwenden.